



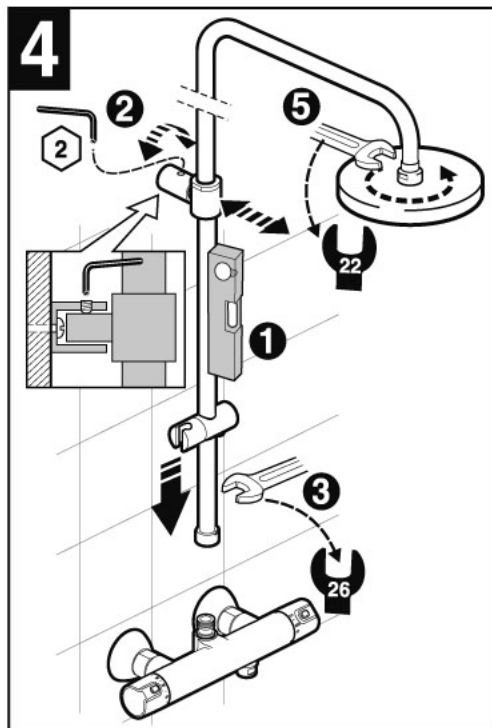
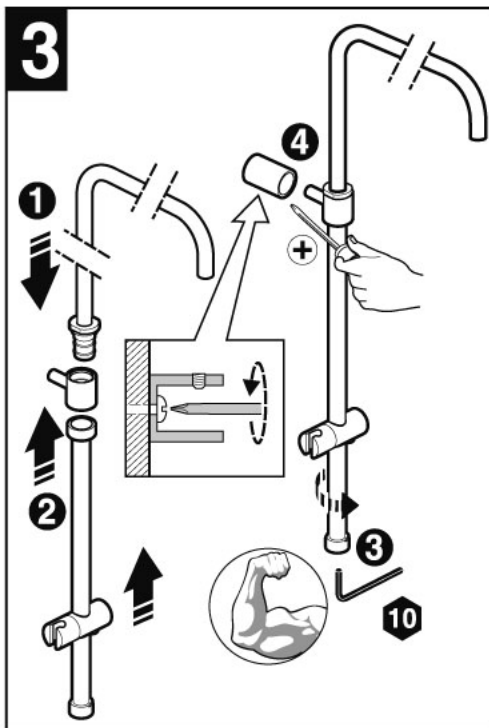
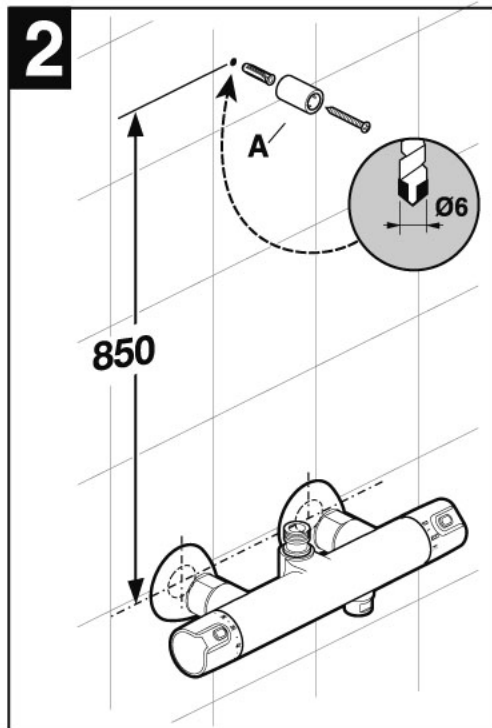
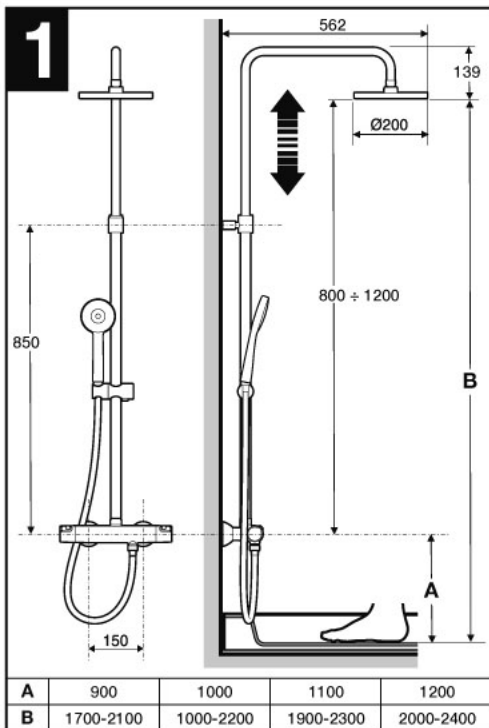
**Roca**

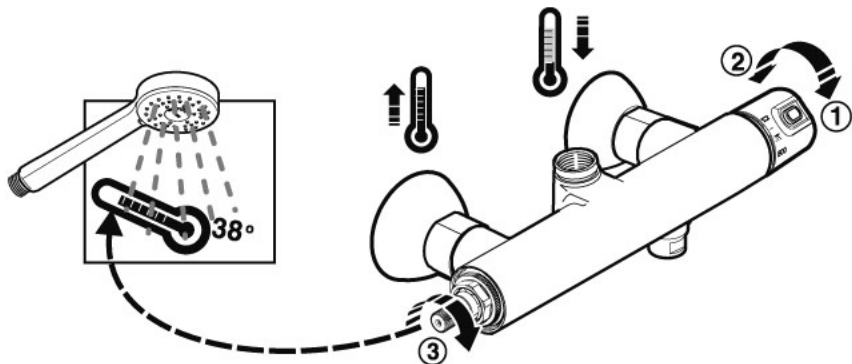
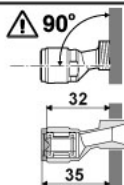
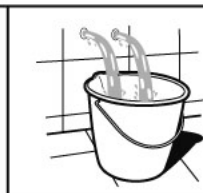
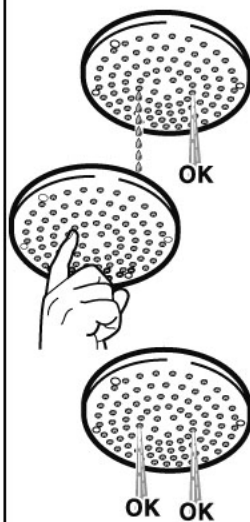
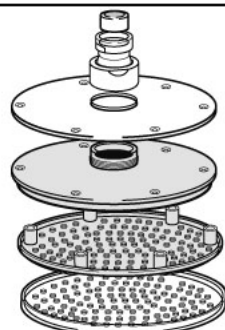
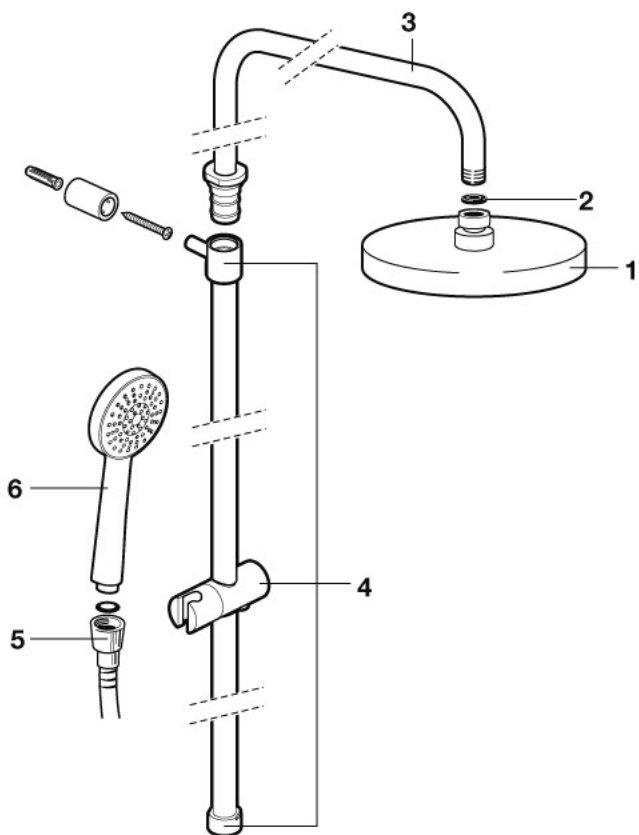
---

**VICTORIA-T  
ADJUSTABLE**

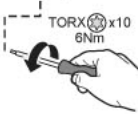
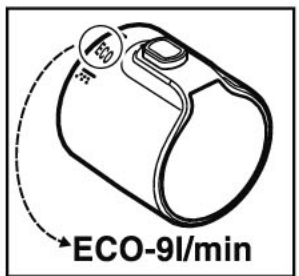
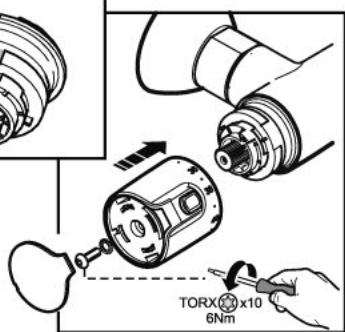
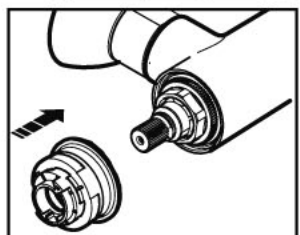
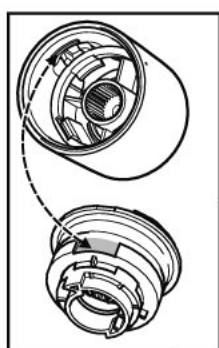
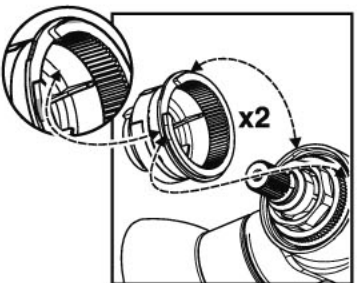
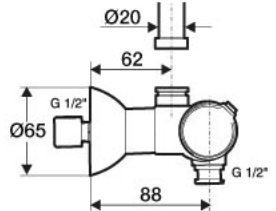
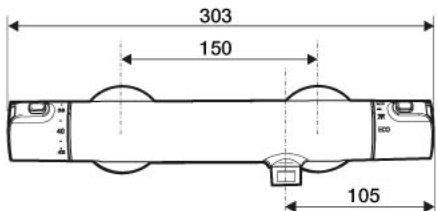
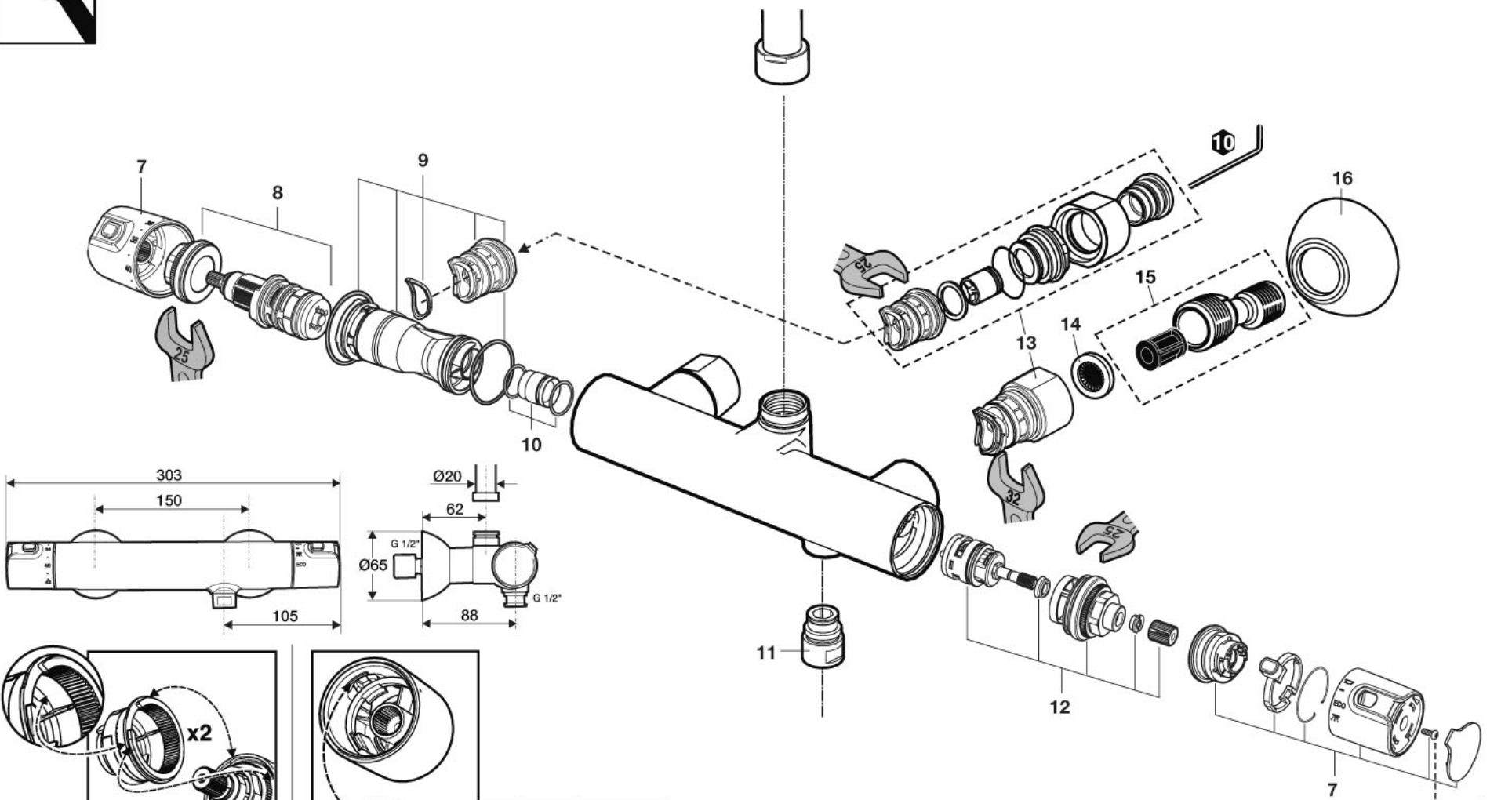
A5A2018..0



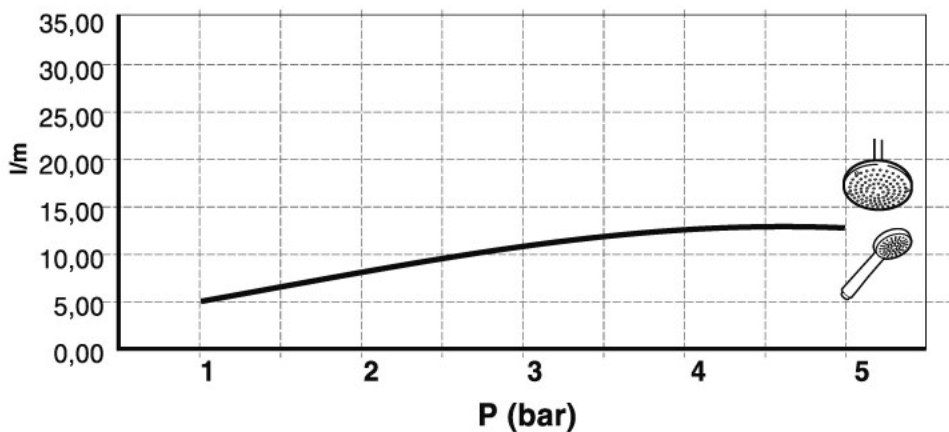

















**5**

2



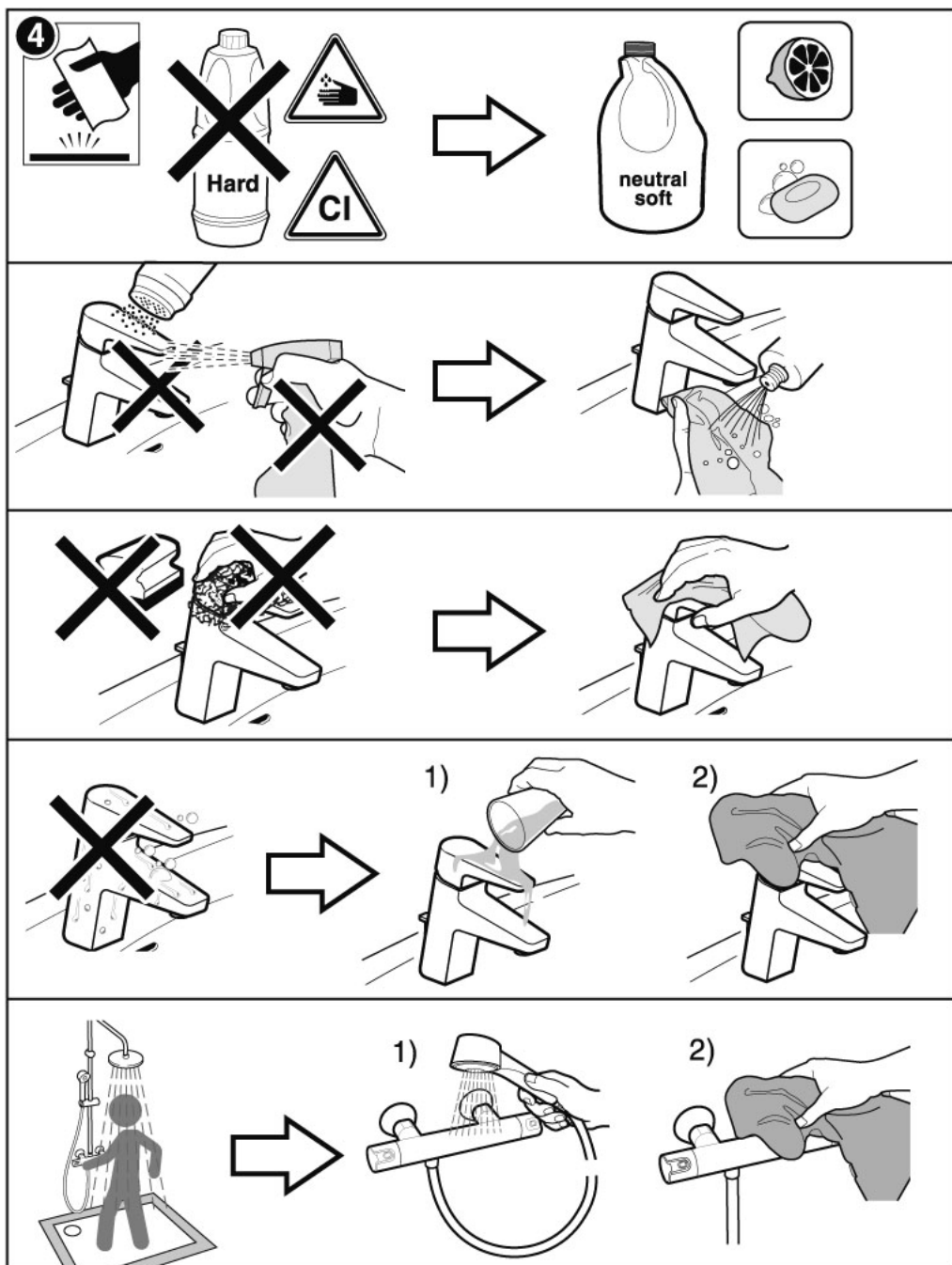
3



|  |                   |   |
|--|-------------------|---|
|  <b>P</b>    | <b>P</b><br>bar   |  MAX.<br>10   |
|  <b>P</b>  | <b>P</b><br>bar   |  MIN. 0,5<br>MAX. 5<br> 3<br>          |
|  <b>T</b>  | <b>T</b><br>°C    |  -80 MAX.<br>-45 MIN.<br> 65<br>50<br> |
|  <b>Q</b><br>( 3 bar )   | <b>Q</b><br>l/min |  12<br>   |

$$P_{\uparrow} - P_{\downarrow} \leq 2$$

|                |                |                 |                 |
|----------------|----------------|-----------------|-----------------|
| 1 - A5B9850C00 | 5 - A525009800 | 9 - A525015907  | 13 - A525016000 |
| 2 - AG0056807R | 6 - A5B9B03C00 | 10 - A525017203 | 14 - A525016207 |
| 3 - AG0082400R | 7 - AG0041600R | 11 - A525016609 | 15 - A505016303 |
| 4 - AG0082500R | 8 - A525015803 | 12 - A525016803 | 16 - A525008600 |



Roca Sanitario, S.A.

Avda. Diagonal, 513  
 08029 Barcelona SPAIN  
 Teléfono 93 366 1200  
 Fax 93 419 4501  
 www.roca.es

**Roca**

A543094407f